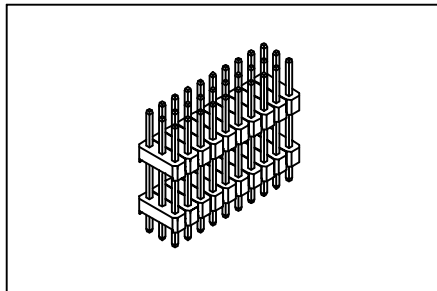


Pin Header Triple Row, & Dual Insulator 2.54mmX2.54mm(0.100"X0.100")

GXCON



Material:

Housing: 30% Glass filled PBT UL94V-0.

Contacts: Brass.

Plating: Gold plated over nickel.

Tin plated over nickel.

Electrical Characteristics:

Current Rating: 1 AMP.

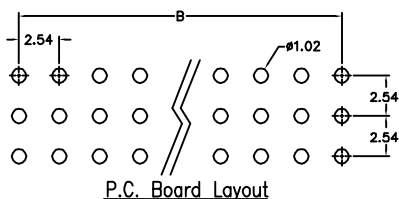
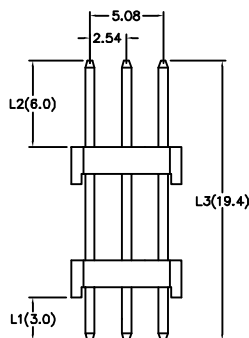
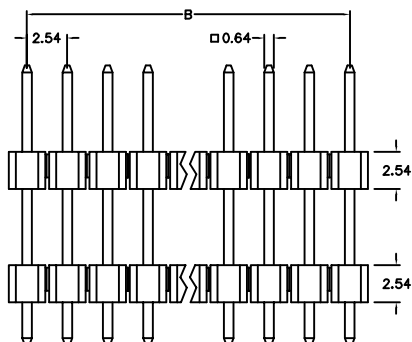
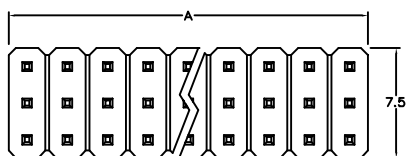
Insulator Resistance: 5000MΩmin. at DC 500V.

Contact Resistance: 20mΩmax. at DC 100mA.

Operating Temperature: -55°C ~ +105°C .

Features:

- * Dual insulators offer high versatility.
- * Side-to-side and end-to-end stackable.
- * Custom design provides excellent products flexibility.
- * 9 pin through 120pin available.



Position	9 Thru 120
Dimension	
A	2.54 X No. of Positions /3
B	2.54 X No. of Positions /3-2.54

Ordering information

PH02- 3 40 1 1 /L1 /L2 /L3
 Series Triple Row No. of Pin Per Row 1: Gold Plated 1: Straight
 2: Tin Plated

Custom Design: Straight (i.e. PH02-34011/L1 /L2 /L3)